



610 High Road Leyton

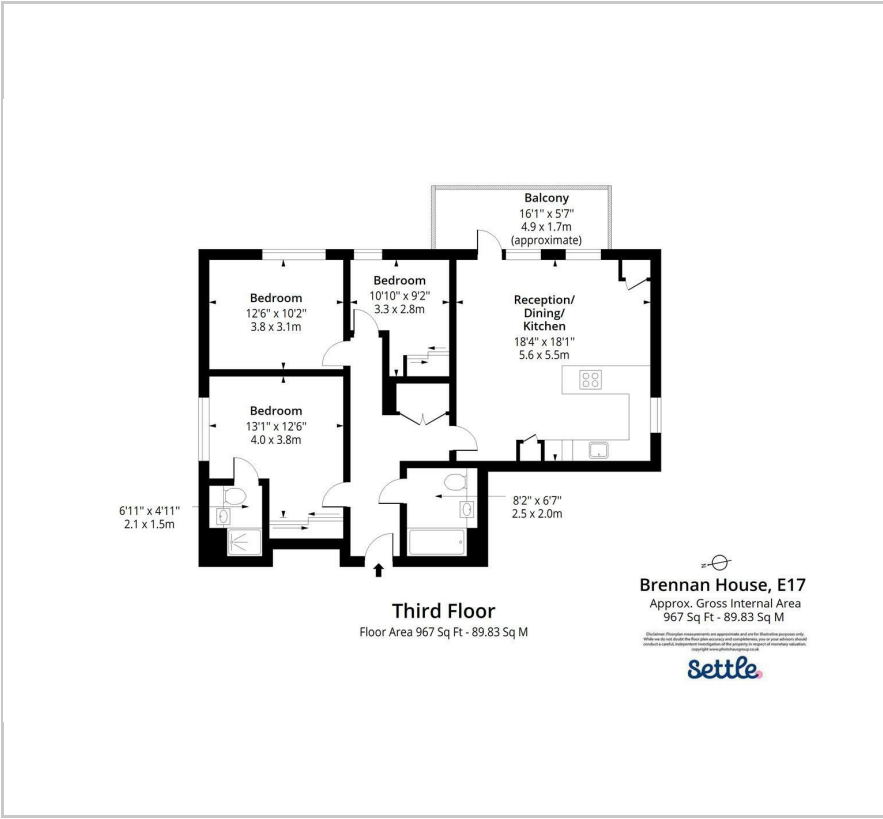
, London, E10 6RN

Offers in excess of £475,000





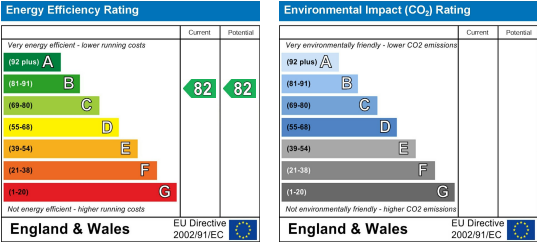
Floor Plan



Area Map



Energy Efficiency Graph



Viewing

Please contact our Settle Office on 0208 124 2522 if you wish to arrange a viewing appointment for this property or require further information.

- Modern Development
- Set On The Third Floor
- Three Bedrooms
- Private Balcony
- 0.2m To Leyton Midland Station
- Close To Local Amenities
- Gated Car Park With Allocated Space
- 967 Sq Ft - 89.83 Sq M



This modern apartment is set within a well-maintained development and is positioned on the third floor, offering bright and well-balanced accommodation throughout.

The property features a spacious open-plan reception, dining, and kitchen area, creating an ideal space for both everyday living and entertaining. Doors lead directly onto a private balcony, providing a welcome outdoor extension to the living space.

There are three well-proportioned bedrooms, including a principal bedroom with en-suite facilities, along with a contemporary family bathroom. The layout is practical and well suited to families, professionals, or sharers.

Further benefits include gated off-street parking with an allocated space and a convenient location close to local amenities. Leyton Midland Road Station is within easy walking distance, providing excellent transport links.



These particulars, whilst believed to be accurate are set out as a general outline only for guidance and do not constitute any part of an offer or contract. Intending purchasers should not rely on them as statements of representation of fact, but must satisfy themselves by inspection or otherwise as to their accuracy. No person in this firm's employment has the authority to make or give any representation or warranty in respect of the property.